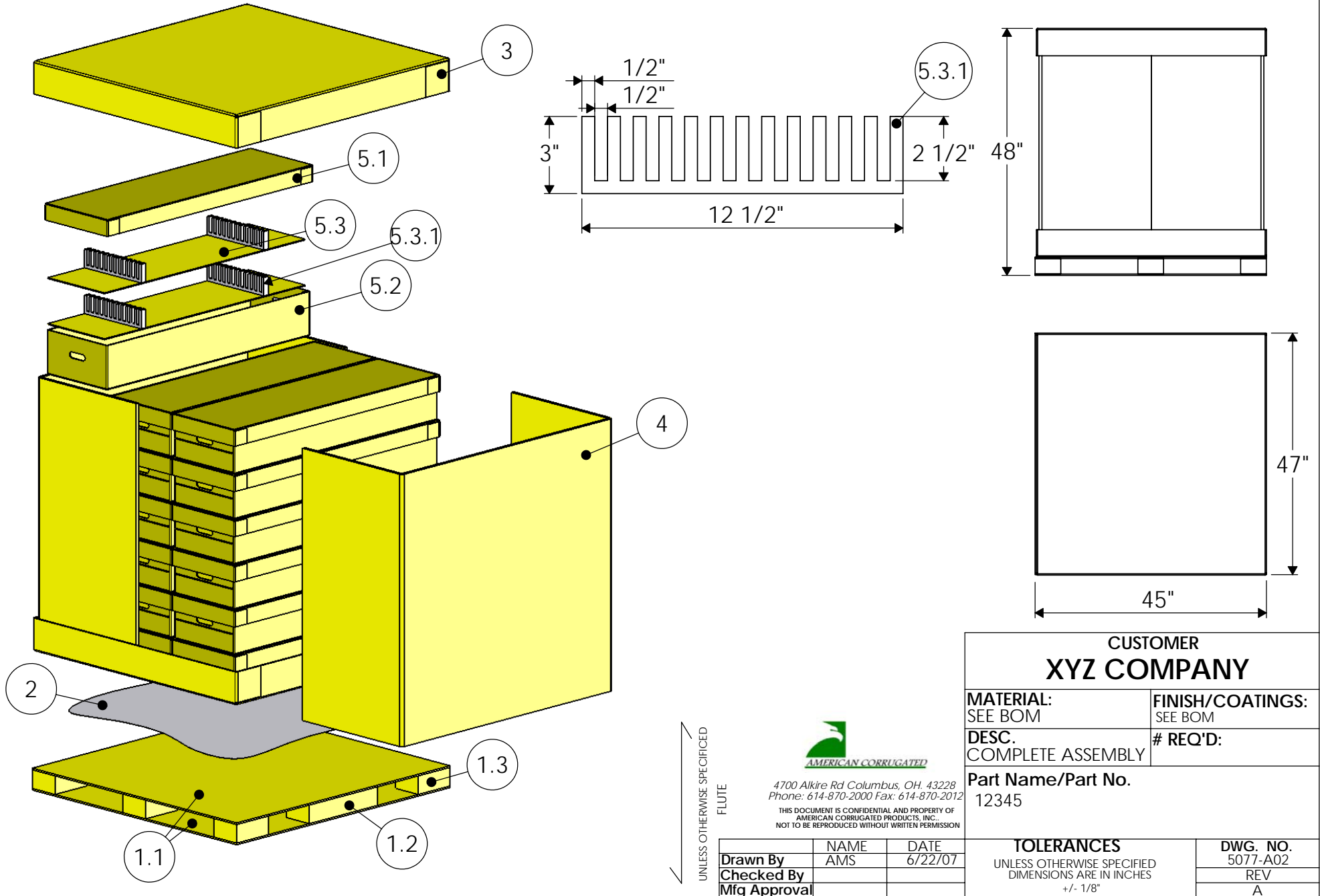


NOTES	
DET.	DESCRIPTION
A	12 PARTS PER LAYER/2 LAYERS PER BOX/18 BOXES PER PALLET/432 PARTS PER PALLET
B	SHEET 1 OF 2; SEE SHEET 2 FOR BOM

REVISIONS				
REV.	DESCRIPTION	DATE	APP. BY	APP. DATE
A	RELEASE	6/22/2007		



UNLESS OTHERWISE SPECIFIED
FLUTE



4700 Alkire Rd Columbus, OH, 43228
Phone: 614-870-2000 Fax: 614-870-2012
THIS DOCUMENT IS CONFIDENTIAL AND PROPERTY OF
AMERICAN CORRUGATED PRODUCTS, INC.
NOT TO BE REPRODUCED WITHOUT WRITTEN PERMISSION

	NAME	DATE
Drawn By	AMS	6/22/07
Checked By		
Mfg Approval		

CUSTOMER XYZ COMPANY	
MATERIAL: SEE BOM	FINISH/COATINGS: SEE BOM
DESC. COMPLETE ASSEMBLY	# REQ'D:
Part Name/Part No. 12345	
TOLERANCES UNLESS OTHERWISE SPECIFIED DIMENSIONS ARE IN INCHES +/- 1/8"	DWG. NO. 5077-A02 REV A



4700 Alkire Rd Columbus, OH. 43228
 Phone: 614-870-2000 Fax: 614-870-2012

THIS DOCUMENT IS CONFIDENTIAL AND PROPERTY OF
 AMERICAN CORRUGATED PRODUCTS, INC.
 NOT TO BE REPRODUCED WITHOUT WRITTEN PERMISSION

ITEM NO.	PART NUMBER	DESCRIPTION	CUSTOMER PART NO.	MATERIAL	FINISH	LENGTH	WIDTH	DEPTH	QTY.
1	5077-A01	PALLET ASSEM.		SEE BELOW	SEE BELOW	47	45	3.5	1
1.1	5077-P01	PAD		48 ECT-BC	KRAFT	47	45		2
1.2	5077-P02	B.U.B		48 ECT-AC	KRAFT	15	5	3 CORR	3
1.3	5077-P03	B.U.B		48 ECT-AC	KRAFT	7	5	3 CORR	6
2	5077-P05	ADHESIVE		COLD SET GLUE	WHITE				1
3	5077-P04	PTC		42 ECT-BC	KRAFT	46.5	44	5	2
4	5077-P06	SSH		700# ACC	KRAFT	44	88		2
5	5077-A03	CARTON ASSEMBLY		SEE BELOW	SEE BELOW				18
5.1	5077-P08	PTC		32 ECT-C	KRAFT	45	13.25	2.5	1
5.2	5077-P07	HSC		44 ECT-C	KRAFT	44.4375	12.75	6.875	1
5.3	5077-A05	DUNNAGE ASSEMBLY		SEE BELOW	SEE BELOW				2
5.3.1	5077-P10	FOAM D/C		2# XLPE	ANY	12.5	1	3.25	2
5.3.2	5077-P09	SSH		32 ECT-C	KRAFT	43.1875	12.5		1